

**A Guide to the Nine Species
of *Caulerpa*
Banned in
California**

Caulerpa taxifolia



Photo: R. Woodfield



Photo: G. Peters



Photo: R. Woodfield

Ca



Caulerpa racemosa

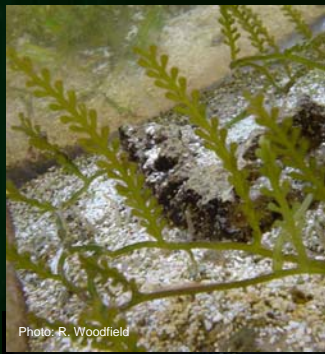


Photo: R. Woodfield



Cau



Photo: Ria Tan

Caulerpa sertularioides



Photo: John Rice



Caulerpa ashmeadii



Ca





Photo: Ria Tan

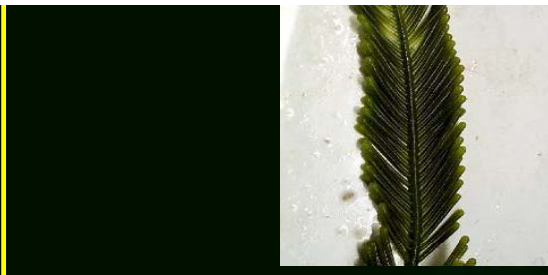


Photo: Vincent B. Hargreaves

Caulerpa scalpelliformis



Photo: John Huisman

Caulerpa verticillata

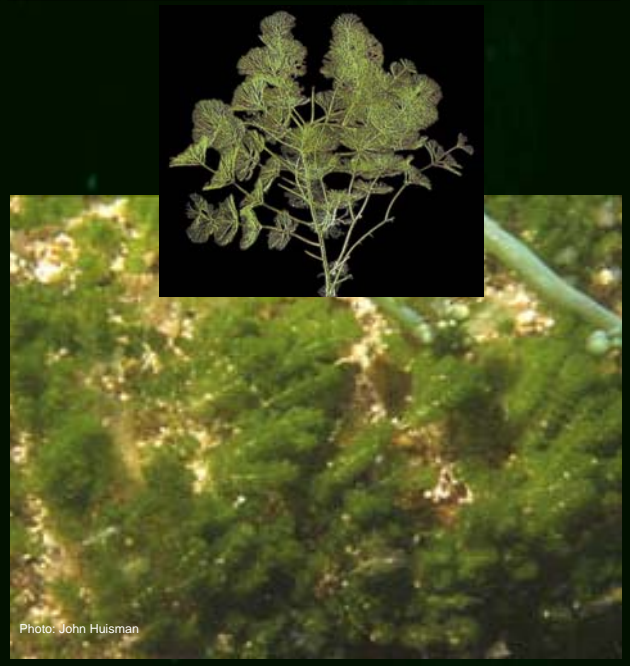


Photo: John Huisman

Your Help is I

- Never discharge aquarium pets/plants into the wild
- Help spread the word ab
- Report observations of C wild or in pet stores.
- If you find *Caulerpa* in th
 - Note as much informat (location, depth, bottor
 - Record the location wit make a map if possible
 - Carefully collect a sma it flat in newspaper.
 - Take a photo if possibl

R
CA



Caulerpa mexicana



Caulerpa cupressoides



Caulerpa floridana



Photo: John Rice



Hargreaves

Help is Needed!

Large aquariums or release into the wild.
 Help spread the word about *Caulerpa*.
 Report observations of *Caulerpa* in the wild or in pet stores.
Caulerpa in the wild:
 Provide as much information as possible (depth, bottom type, patch size).
 Record the location with a GPS and a map if possible.
 Collect a small piece and press it in a newspaper.
 Photograph if possible.

REPORT ANY SIGHTINGS TO:
www.seccat.net
 or
 CALIFORNIA DEPT OF FISH AND GAME
 (888) 467-4218

Prepared by **Merkel & Associates, Inc.**

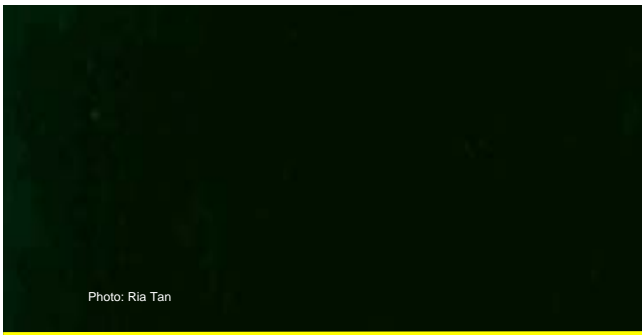
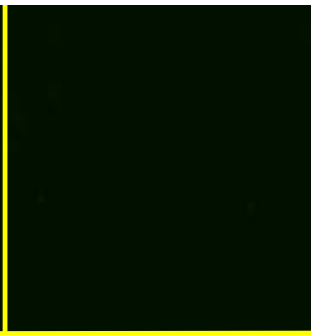


Photo: Ria Tan



Caulerpa sertulariodes



Photo: John Rice



Photo: Ria Tan

Caulerpa



Photo: X



Current CDFG Picture here

Photo: X

Caulerpa scalpelliformis



Your Help is Needed!

- Never discharge aquariums or release pets/plants into the wild.
- Help spread the word about *Caulerpa*.
- Report observations of *Caulerpa* in the wild or in pet stores.
- If you find *Caulerpa* in the wild:

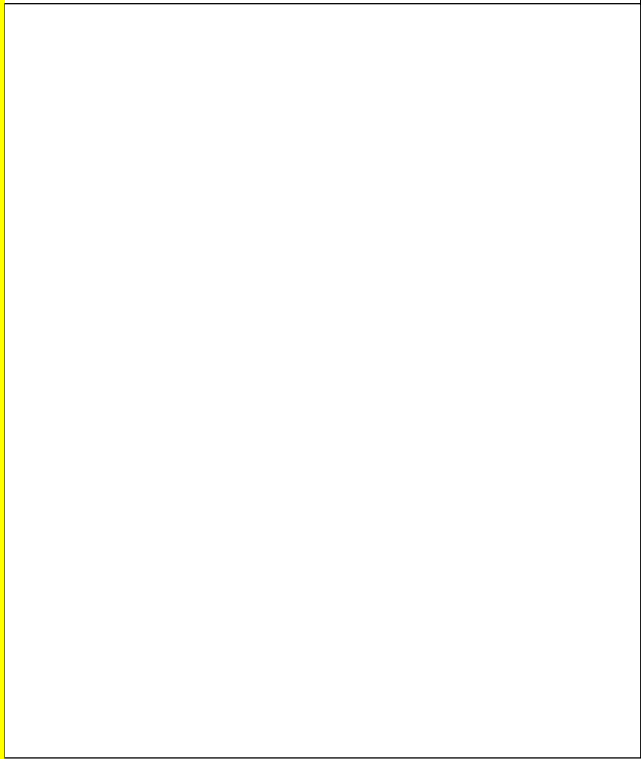


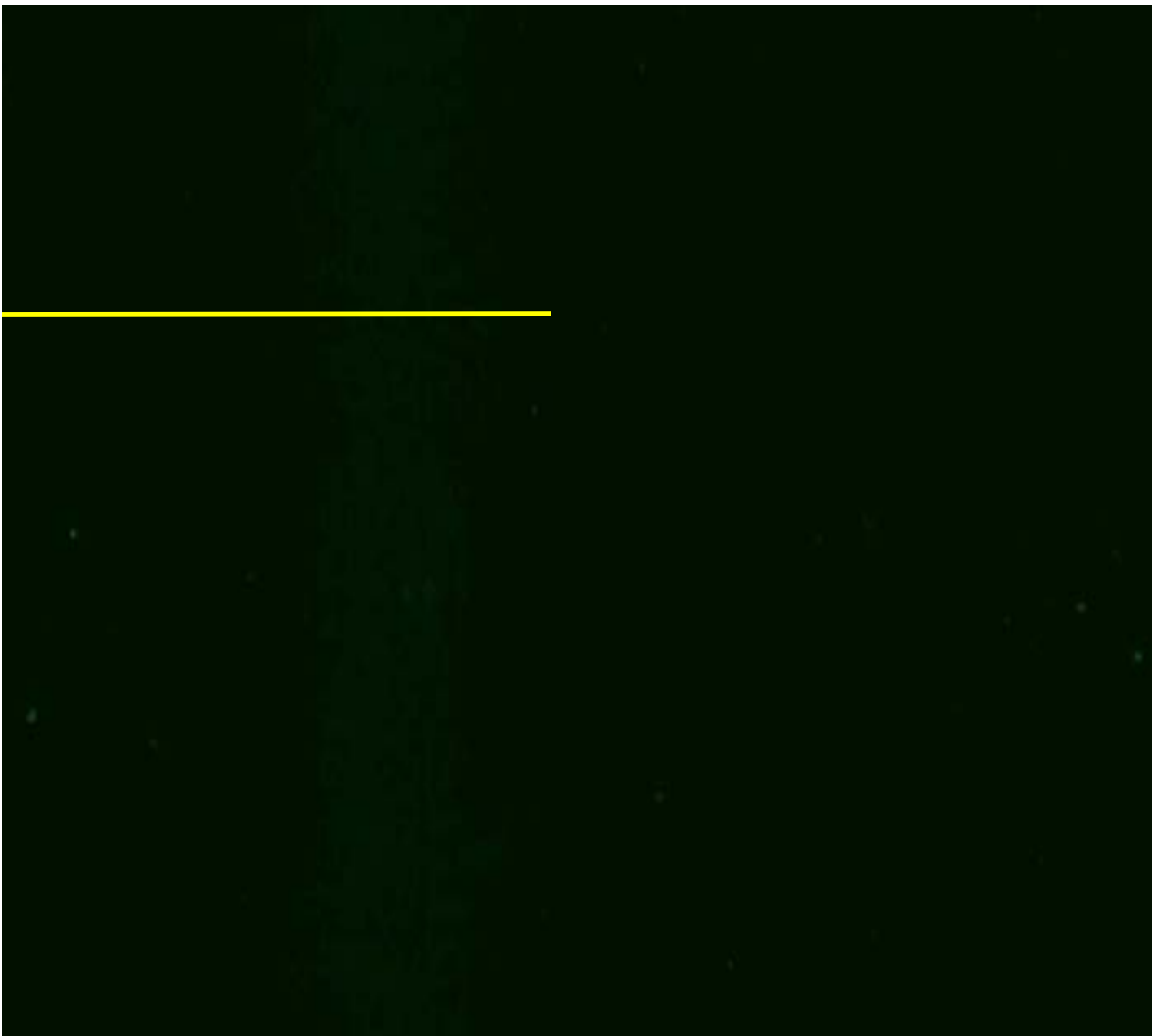
- If you find *Caulerpa* in the wild:
 - Note as much information as possible (location, depth, bottom type, patch size, etc.)
 - Record the location with a GPS and make a map if possible.
 - Carefully collect a small piece and keep it flat in newspaper.
 - Take a photo if possible.

REPORT AN
NOAA
(562)
CALIFORNIA DEP
(858)

Photo: G. Peters

Photo: R. Woodfield





Caulerpa ashmeadii



Current CDFG Picture here

our Help is Needed!

Never discharge aquariums or release plants into the wild.
Help spread the word about *Caulerpa*.
Report observations of *Caulerpa* in the wild or in pet stores.
If you find *Caulerpa* in the wild:

you find *Caulerpa* in the wild:

Note as much information as possible
location, depth, bottom type, patch size).

Record the location with a GPS and
make a map if possible.

Carefully collect a small piece and press
it flat in newspaper.

Take a photo if possible.

REPORT ANY SIGHTINGS TO:

NOAA FISHERIES
(562) 980-4043

or

CALIFORNIA DEPT OF FISH AND GAME
(858) 467-4218